

PRESENTING DEWBERRY'S NATIONAL PRACTICE

JUSTICE ARCHITECTURE



Our Commitment

Transformative justice design
that fosters restorative outcomes.

Table of Contents

SECURE HOUSING	7
.....	
COURTHOUSE	43
.....	
PUBLIC SAFETY	57
.....	
SECURITY AND TECHNOLOGY	73
.....	
SUSTAINABILITY	77
.....	

Our Profile

We are a service-oriented firm with a proven history of providing professional services to a wide variety of public and private-sector clients. Recognized for combining unsurpassed commitment to client service with deep subject matter expertise, we are dedicated to solving clients’ most complex challenges and transforming their communities. Established in 1956, we are headquartered in Fairfax, Virginia, with more than 60 locations and 2,500 professionals nationwide.

A national firm that is regularly included in *Engineering News-Record’s* lists of the top A/E firms in the country, we remain committed to providing the highest standards of professional services. Our designs have been recognized with more than 350 juried awards on national, regional, and local levels and we continue to work today to remain on the leading edge of architectural and interior design in all of our market segments.

One of the first firms in the U.S. to specialize in justice architecture, we have worked in this vital practice area for nearly 40 years. Many of the professionals within our justice practice—including our in-house security and technology group—have devoted their careers to the design of justice facilities. This expertise allows us to respond to our clients’ unique requirements with fresh and creative solutions that are operationally sound and use a range of alternative delivery methods, including design-build and public-private partnerships.

As a national leader in justice facility design, we understand the importance of these facilities in the life of the public sector. The physical embodiment must inspire confidence; convey a sense of stability, reverence, and dignity; and project and provide openness and accessibility. We work with clients to design safe and secure facilities to accommodate staff and the general public in a secure environment while accounting for the sensitive nature of these projects.

Our studio professionals have worked with all levels of the justice environment: municipal, state, and federal. Our involvement in the justice community gives us a thorough understanding of the complex issues facing systems today. With every project, we strive to offer clients responsive solutions to the challenges of social justice and civic architecture. Offering a complete range of services, from feasibility studies and system master plans to full designs for renovations, expansions, or new stand-alone facilities, we have developed a reputation for reliability and full-services design solutions.

Our Team



James L. Beight, AIA, LEED AP
DIRECTOR OF JUSTICE ARCHITECTURE

Jim has over 40 years of experience as an award-winning designer of public projects with a specialized background in justice projects. During the last 10 years, he has served as Dewberry's Director of Justice Architecture, overseeing Public Safety, Courthouse and Detention/Secure Housing design. In this role, he is responsible for the overall quality of work and providing adequate resources to meet the demands of the practice.



Bruce Omtvedt, AIA, ASTM F-33
SENIOR SECURE HOUSING DESIGNER/PROGRAMING & PLANNING

Bruce has more than 30 years of experience with a focus on planning and design for public safety, secure housing, justice, and government facilities. He is an expert in detention space planning with security projects totaling more than \$2 billion in construction value and client-facing experience on more than 45 projects. Bruce leads programming, planning, and design of secure facilities as Market Segment Leader for secure housing and detention.



Brooke Martin, AIA, CCHP, LEED Green Associate
PROJECT MANAGER

Brooke is a licensed architect with nearly 20 years of experience. Her passion and expertise is centered on Justice Architecture, specifically Secure Housing Reform, Restorative Justice, and Recovery: focused on challenging the status quo through supportive, trauma-informed, intentionally humane design that supports positive, treatment-focused outcomes within skill-building and learning environments and integrating functions that fit within a community's continuum-of-care.



Bradley Hall AIA
SENIOR SECURE HOUSING ARCHITECT

Brad has over 50 years of experience with subject matter expertise in secure housing design. Highly versed in all phases of the design process, he provides building code reviews, coordination of architectural drawings, and value engineering. Brad is involved in the complete process of quality assurance reviews, cost estimates, shop drawing reviews, and inquiries to bidding and construction documents.



Jonathan Tallman, AIA, GGP, GPCP, NCARB
PUBLIC SAFETY MARKET SEGMENT LEADER

Jonathan has over 20 years of experience in public safety architecture and is a subject matter expert in public safety planning and programming. He is knowledgeable in space needs analysis, conceptual design, construction documents, design development, and construction administration phase work for public safety projects, including police departments, fire stations, and other civic facilities.



Cassandra Franco, AIA, LEED AP
MEDICAL/MENTAL HEALTH SUBJECT MATTER EXPERT

Cassey is a health and wellness architect with over 30 years of professional experience. She brings an impressive portfolio of healthcare, behavioral health, and wellness projects. Her specialized expertise includes identifying and circumventing areas of self-destruction by providing solutions to ligature points, assuming staff has visual access to residents, and specifying tamper-resistant and ligature resistant products.



Chris Monsma AICP
PROGRAMMER/PLANNER

Chris is a Certified Planner with nearly 30 years of experience. He has served as space planner on facility assessment, programming, space needs assessment, and master planning engagements. Chris has completed over 90 facility studies for government clients with an emphasis on public safety facilities. His studies help determine facility needs based on user's operational approaches.



Craig Clary, DBIA
TECHNOLOGY/SECURITY SPECIALIST

Craig is a technology and security designer with nearly 30 years of experience with both new construction and renovation projects. Since joining Dewberry, Craig has devoted himself to the design and application of security, detention and communications technology with a focus on justice projects (jails, prisons, public safety, courts). He obtained his Designated Design-Build Professional certification from DBIA in 2014.



SECURE HOUSING

Mule Creek Infill Complex

IONE, CALIFORNIA

543,884 SF • \$370 million • 2013

The Mule Creek Infill Complex (MCIC) project for the California Department of Corrections and Rehabilitation is a 1,584-bed infill complex adjacent to the existing Mule Creek State Prison (MCSP) in Ione, CA.

The MCIC is a standalone dual complex facility consisting of:

- Complex control services building
- Electrified fence secure perimeter
- Facility food services satellite
- Facility support services buildings / healthcare services
- Family visiting building
- Guard towers
- Program support services building
- Receive and release building
- Six level II dormitory style housing units (three per facility) to accommodate 264 inmates each, for a combined total of 1584 inmates
- Vehicle sallyport
- Visitor/staff entrance building
- Work change buildings
- Work zone building

As part of a design-build team, we served as design architect for the six dormitory housing units and the work zone/work change buildings. We also designed detention and security electronics for the entire building complex.



Calaveras County Adult Detention Facility and Sheriff's Administration Facility

SAN ANDREAS, CALIFORNIA

118,000 SF • \$44 million • 2014

We were the lead designer and architect of record for a new adult detention facility (ADF) and sheriff's administration building for the county. This facility was one of the first projects designed and constructed using AB900 funding by the state of California. We assisted the county throughout the lengthy and rigorous AB900 process, which led to funding for the new facility.

The ADF is designed to house 160 inmates within six separate pods — two male general population pods, two female general population pods, one male administrative segregation pod, and one female administration segregation pod. All pods include double-bunked cells, inmate program spaces, and outdoor recreation areas. Other key elements include a full-service kitchen, medical area, future dental space, laundry room, drive-thru sallyport, and a connecting tunnel to the adjacent county courthouse to transport inmates to and from court. The detention facility includes a state-of-the-art security and technology package to provide safety for the staff and inmates.

The sheriff's administration building includes an E911 emergency dispatch, emergency operations center, evidence processing and storage area, CSI automobile garage, interview rooms, locker rooms, work-out area, public assembly space, and staff communal area. A dormitory was designed as part of the facility but was not built due to funding limitations.

Sustainable features include minimizing woodland removal, photovoltaic panels, solar collectors for domestic hot water, energy efficient building enclosure, high albedo/cool roofing, and energy efficient heating, ventilation, and air-conditioning (HVAC) systems.

We provided architectural planning and design, interior design, security and technology systems design, and construction administration services. Initial services also included architectural program validation, schedule and budget validation, and pre-design engineering services.



David L. Moss Justice Center Jail and Mental Health Expansion

TULSA, OKLAHOMA

83,663 SF • \$83 million • 2018

To address overcrowding and better serve inmates with mental health needs, in 2014 voters approved funding for the expansion to the Tulsa County Jail, which originally opened in 1999. The expansion's primary focus is to provide specialized housing and treatment spaces that are essential to assisting those in need of mental health services.

The new mental health unit consists of two pods that have a capacity of up to 98 beds, four levels of security, and an office and counseling spaces, as well as facilities for video court processing. To create a more therapeutic, calming environment, we introduced more daylight into the space. Adjacent to the unit is a mental health treatment area, which accommodates both inmates in the mental health pods and those undergoing treatment for mental issues throughout the entire facility. The general population unit includes two new pods that can accommodate up to 160 inmates in a dorm style setting, and also enables the county to provide flexibility for future operational programming.

The addition matches the exterior of the original facility and was designed to be operationally efficient, allowing for clear lines of sight and ample sound absorption.



Stanislaus County Public Safety Facilities Expansion

MODESTO, CALIFORNIA

170,900 SF • \$87 million • 2016

As part of a design/build team with Hensel/Phelps, we provided architecture, interiors, and security/detention design for the expansion of the county's jail and public safety complex. The jail consists of two maximum-security housing units (totaling 480 beds), medical/mental health housing unit (57 beds), health services unit, security administration (control) center, and all necessary circulation and common space.

Also included is a new intake, release and transportation center, which includes facility administration, visitor lobby, staff support, and inmate property storage.



DeWitt Nelson Correctional Annex

STOCKTON, CALIFORNIA

210,000 SF • \$136 million • 2014

As part of a design-build team, we served as associate architect for this 1,133-bed secure housing facility for the California Department of Corrections and Rehabilitation. The project involved re-purposing the existing youth correctional facility to an adult male level II facility within the boundaries of the existing state property, and is adjacent to the California Health Care Facility with which it shares primary administration and support.

Existing housing units were re-purposed for medical and inmate-worker housing, and other key components, such as medical clinic, visiting, kitchen, education, and a gymnasium to operate the facility. The project also included a new enhanced outpatient facility housing 425 inmate-patients along with an 11,000-square-foot medical yard clinic and a 10,000-square-foot mental health outpatient clinic.

We revised the criteria architect's planned existing dormitory style housing units that had circulation, staffing, and construction issues into new, remodeled dormitory housing units that have exceeded our client's expectations. The modified layouts reduce the inmate and staff circulation by moving the locations of the dayroom, toilet, shower, warming kitchen, and outdoor recreation spaces. These changes allowed for a central control location from which one correctional officer can observe the entire pod in lieu of the planned two correctional officers. Our solution also allows for much more natural light to enter the unit than the original design. Our functional design approach was more easily constructed and more cost effective, resulting in additional project enhancements.



Nebraska Community Corrections Center

LINCOLN, NEBRASKA

57,000 SF • \$21 million • 2019

Our justice team has a multi-year history of consistent work with the Nebraska Department of Correctional Services CND(S). This expansion of the Community Corrections Center – Lincoln, designed in conjunction with Carlson West Povondra Architects, includes a new 160- bed women's housing facility as well as a support building serving the women and the existing 400-bed men's facility. The women's facility is organized around a single open two person staff station with sightlines down the four 40-bed wings (two person dry rooms) and open dayroom with four activity areas.

Residents are served by four office/therapy rooms, four multi-purpose (visiting, education, exercise) rooms, two laundry/toilet/shower/nourishment areas, and one resident processing and temporary holding area, visible by the staff station, which also covers the reception desk. The support service building provides medical, kitchen, dining, commissary, maintenance, shop, and warehouse functions for the 560-bed center, and is directly connected to the female facility providing medical, dining, maintenance commissary warehouse, laundry, and trash removal services. The entry point provides a new separate entry for the public and residents to the women's facility, service access to the support building, and a fire loop to the existing service drive on the southeast side of the building.



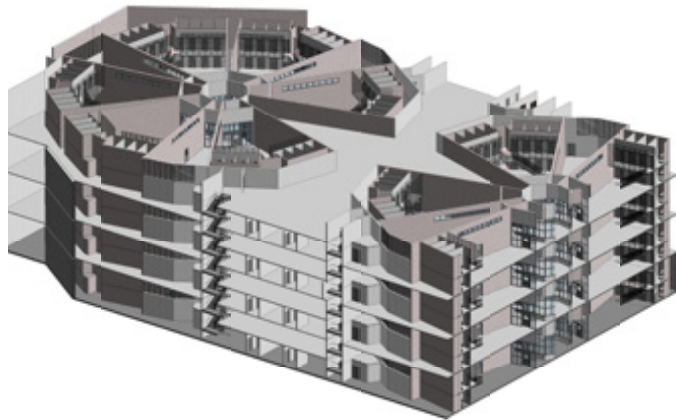
East County Detention Center

INDIO, CALIFORNIA

420,000 SF • \$274 million • 2018

In association with The HOK Group, we were hired to design a 1,600-bed jail addition for Riverside County. The project originally encompassed both a building addition of approximately 420,000 square feet and a remodel of approximately 40,000 square feet for inmate housing and support facilities. Upon completion of the existing facility analysis, it was determined that a new facility would be in the best interest of the county and the most cost effective. The new building will result in a net gain of 1,250 new beds with support facilities.

The new jail will be located across the street from the existing courthouse, and will assist in the rejuvenation of the downtown, a project that will be anchored by the two justice buildings. The new jail will be connected to the courthouse via an underground secure tunnel. In addition, an approximately 200,000-square-foot parking deck is planned to support the new facility.



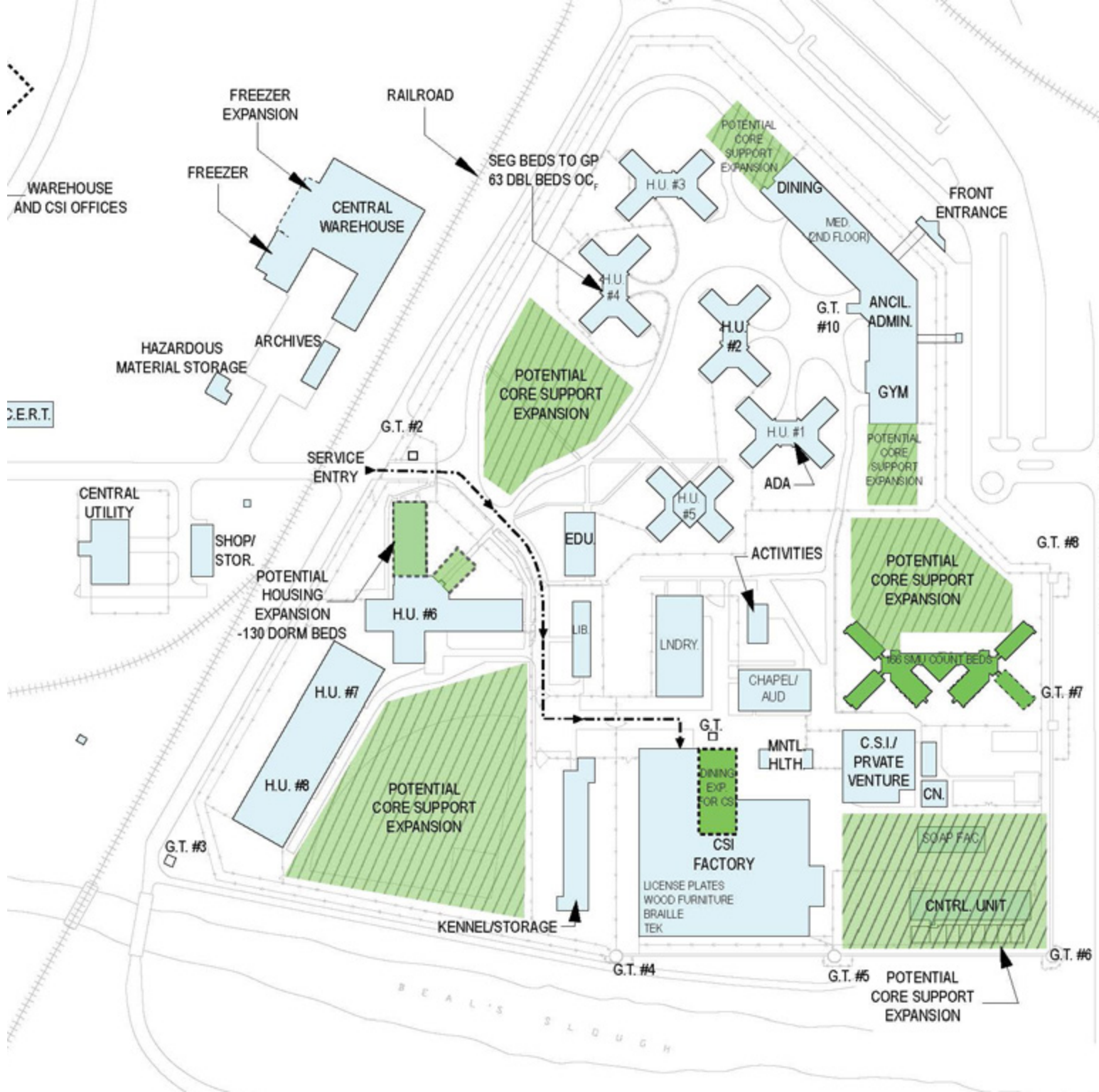
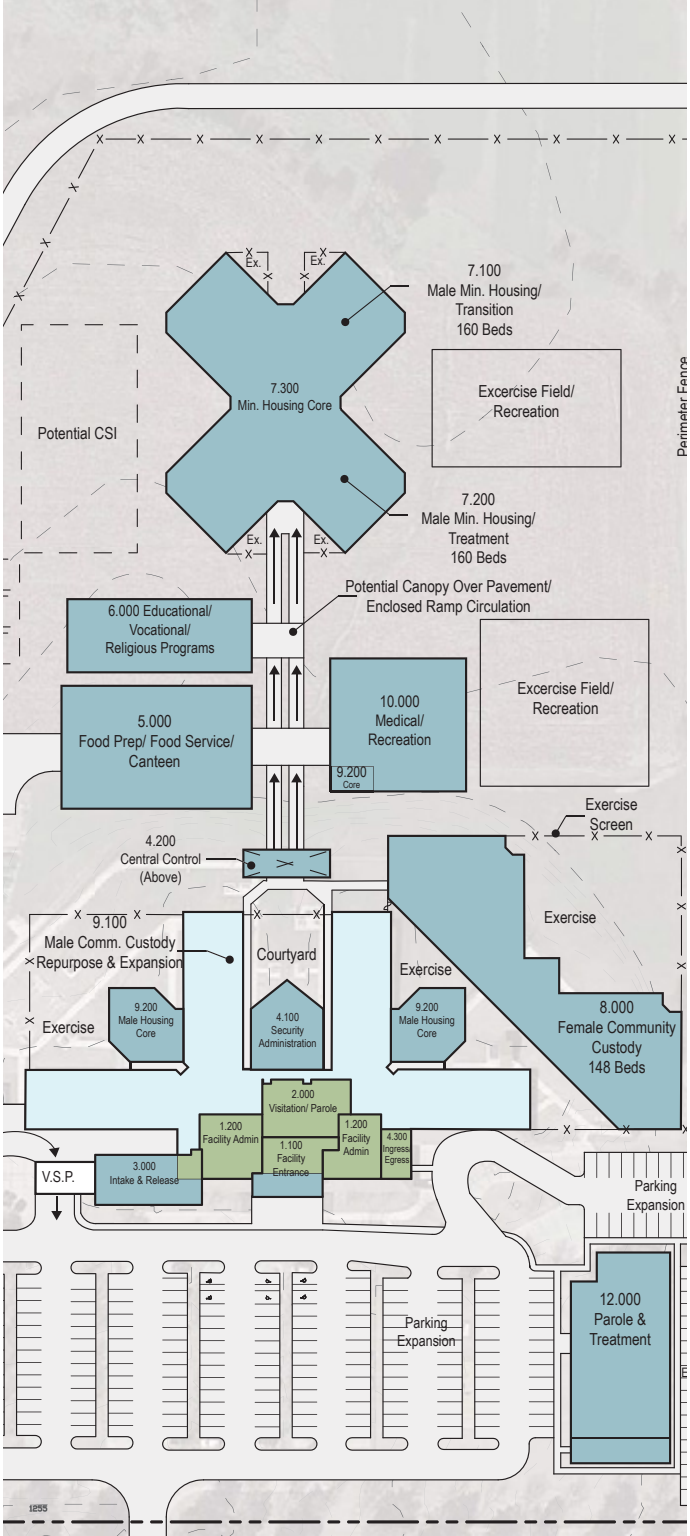
Nebraska Capital Facilities Master Plan

LINCOLN, NEBRASKA

2015

In association with Carlson West Povondra Architects, we provided the Nebraska Department of Correctional Services a comprehensive and updated strategic capital facilities plan to address a statewide shortage of inmate beds. The scope of the work included review and verification of population projections, an analysis of NDCS' existing physical plan to establish the best use for each facility, projections of bed space needs, operational and architectural programming for each custody level and facility type, and associated capital and operational cost projections.

The master plan provides a strategy for managing the current and anticipated growth of bed space needs through expanded uses of existing facilities as well as development of new bed spaces.



Naval Consolidated Brig — Chesapeake

CLEARWATER, FLORIDA

210,000 SF • \$70 million • 2014

We were contracted by Naval Facilities Engineering Command to develop design bridging documents for a new 400-bed facility on a 25-acre wooded site at the Naval Support Activity Norfolk – Northwest Annex. The five 80-bed housing modules are divided into two 40-bed units, which share decentralized support functions.

The facility is organized with the housing modules on one side of a green activity courtyard used for active exercise (volleyball and basketball) and passive activities (walking, sitting, formal visiting). The other three sides of the courtyard reflect the programs, services, and indoor recreation components of the facility, including security command, intake, counseling, worship, visitation, dining, galley, laundry, warehouse, educational training, vocations, and gym.

The main entrance for staff and public is through a two-level staff support/administration element and central lobby. The last two facility organizing elements are the service yard — defined by the central plant, service dock, vocational elements, warehouse and vehicular sallyport — and the large outdoor exercise yard, which is sized for a walking track, two softball fields, and a soccer/football field area. The facility was designed to meet LEED® Gold guidelines and is master planned for two additional housing units of 160 beds.

Because of our service to this client and dedication to detail, the Director of Navy Corrections William Peck, presented awards to us and the NAVFAC project manager for design excellence of the functional concept and the RFP documents.



Lancaster County Adult Detention Facility

LINCOLN, NEBRASKA

258,000 SF • \$60.5 million • 2013

As part of a design team led by Clark Enersen Partners, we assisted the Lancaster County Department of Corrections in consolidating their two separate facilities into one to provide a safe, secure, and humane environment for inmates and staff. The 258,000-square-foot, 779-bed facility is a direct supervision podular design.

Using an inclusive community design studio concept, the design team invited community stakeholders to be an important part of the planning and design process, as well as community re-entry coordination during the construction phase. The community design studio supported interactive workshops, full-scale mock-ups, and testing of various manufacturers' products.

The facility design reinforces a balance of security and cost effectiveness, while meeting long-term incarceration needs, programmatic opportunities to change inmate behavior, and improved public safety.



Oklahoma Forensic Center and Expansion

VINITA, OKLAHOMA

100,000 SF • \$18 million • 2025

This new 200-bed forensic center for the Oklahoma Department of Mental Health is located adjacent to the state's existing mental health psychiatric facilities in Vinita and houses individuals deemed incompetent to stand trial and those judged not guilty by reason of insanity.

The center houses residents in eight 25-bed units organized around four back-to-back nursing/staff stations. The facility's therapeutic environment allows for natural light and direct outdoor access within each unit, as well as access to the program and treatment mall of counseling, recreation, medical, dining, visiting, and commissary activities.

The facility was designed for future expansion to accommodate 300 residents. Administration, records, and staff training components are located outside the secure perimeter.

We are currently designing an 80-bed expansion of this facility.



Baltimore Youth Detention Center

BALTIMORE, MARYLAND

100,000 SF • \$28 million • 2017

For years, the Maryland Department of Public Safety and Correctional Services' (DPSCS) housed youth being tried as adults in the Baltimore City Detention Center with the adult population. The facilities made it difficult to efficiently provide adequate site and sound separation between the youth and the adult populations. Many of the programs and services unique to the youth were inadequate, off-site, or remote which required significant movement and transport, and caused increased operational inefficiency.

In a joint venture with Penza Bailey Architects, we planned and designed the 60-bed youth detention center for DPSCS. The team evaluated the space program previously developed by Maryland's Department of Juvenile Services and the existing conditions, schedule, and budget. This analysis led to creating a larger percentage of addition by demolishing a three-story portion of the existing pre-release facility that did not economically lend itself to the functional requirements of the project.

Programming with flexible floor plans was proposed for the portion of the project slated for renovation. More function-driven program elements, such as housing, were proposed for the new addition to allow planning for economic construction and efficient accommodation of the more operationally demanding spaces.

The five housing units were designed for 12-14 youth in single rooms in a direct supervision setting, with support programs organized to minimize movement during daily activity schedules. All housing and services were organized around a central circulation stair, serving to quickly and conveniently connect the various programs.



DeKalb County Jail Expansion

SYCAMORE, ILLINOIS

83,663 SF • \$28 million • 2018

As part of an overall phased jail expansion, this Phase 1 addition nearly doubles the facility's square footage and bed capacity. It includes three stories and basement, with the main entrance and support space located on the first floor level, and two housing units to the existing 88-bed facility located on the second and third floor levels.

The addition is linked to the existing facility, constructed in 1980, by a second-story bridge for easy transfer of inmates and staff. The building includes a two-story shell space to allow for a future interior build-out that will increase capacity from 140 beds to 197 beds. All current amenities were designed with the expansion in mind and sized properly for the additional capacity.

The building is sited on the existing municipal campus, surrounded by the administration building, legislative center, and the city library and located across the street from the DeKalb County courthouse. We designed the courthouse expansion in 2014.



Columbia County Detention Facility

COLUMBIA COUNTY, FLORIDA

37,514 SF • \$16 million • 2022

Responding to the county's desire to replace the Columbia County Detention Facility (CCDF) built in 1987, we planned and designed a new 384-bed facility, with future expansion for 512 beds. However, due to budget constraints and an immediate need for additional capacity, the county elected to proceed with a building addition to the existing jail.

The newly expanded facility has 256 beds with the capability for an additional eight upper bunks in segregation cells. The expansion allows for the classification of nine various population groups for male, females, and juveniles within its secured perimeter. The efficient design allows the county flexibility to meet diversification needs, while providing total sight and sound separation of juveniles and females from the male population.

The building shell is constructed of a pre-engineered metal building system with a standing seam metal roof and skylights. Individual cells are made of precast concrete. Interior security walls and walls dividing dormitory dayrooms consist of security-level CMU. All required security walls and ceilings were installed to provide for a complete and secure perimeter.

Site work included on-grade mechanical equipment, transformer, and generator pads; partial filling of low lying areas; partial demolition of existing sanitary and storm drains; installation of underground utilities and infrastructure; sanitary connection to forced main; new fire riser and fire hydrant water supply lines; relocation of existing site lighting; and new sidewalks, security fencing, site lighting, and related site signage.



SCI Phoenix Correctional Facilities

GRATEFORD, PENNSYLVANIA

1,000,000 SF • \$352 million • 2018

We provided design, documentation, and construction observation for major portions of this \$352-million correctional complex, which replaces the 1929 Graterford Prison. Located in Skippack Township, Pennsylvania, on over 1,600 acres, this project was delivered by a fast-track, design-build partnership in association with a Walsh/Heery Joint Venture; with Heery International Inc., Dewberry, and Astorino all serving as architects.

This project is one of the largest correctional facilities completed in the U.S. in the last five years. The creativity of our team's approach was the primary reason for our selection to complete the implementation phase of the project. We provided architecture, structural, electrical and plumbing engineering for 12 new housing units showcasing two housing types, new to Pennsylvania, all within the secure perimeter. One of the new housing models includes therapeutic program space within the housing unit itself. We also provided the same services as well as mechanical engineering for a 192-bed female transitional housing unit outside the secure perimeter. Work included significant redesign of the RFP concept to right-size the female transitional unit. This replacement facility can house up to 3,422 offenders.

We provided electronic security and detention equipment design for the complex, including site gates and perimeter security, as well as secure hardware for over 4,000 doors.



Secure Residential Care Center for Children and Youth

MILWAUKEE, WISCONSIN

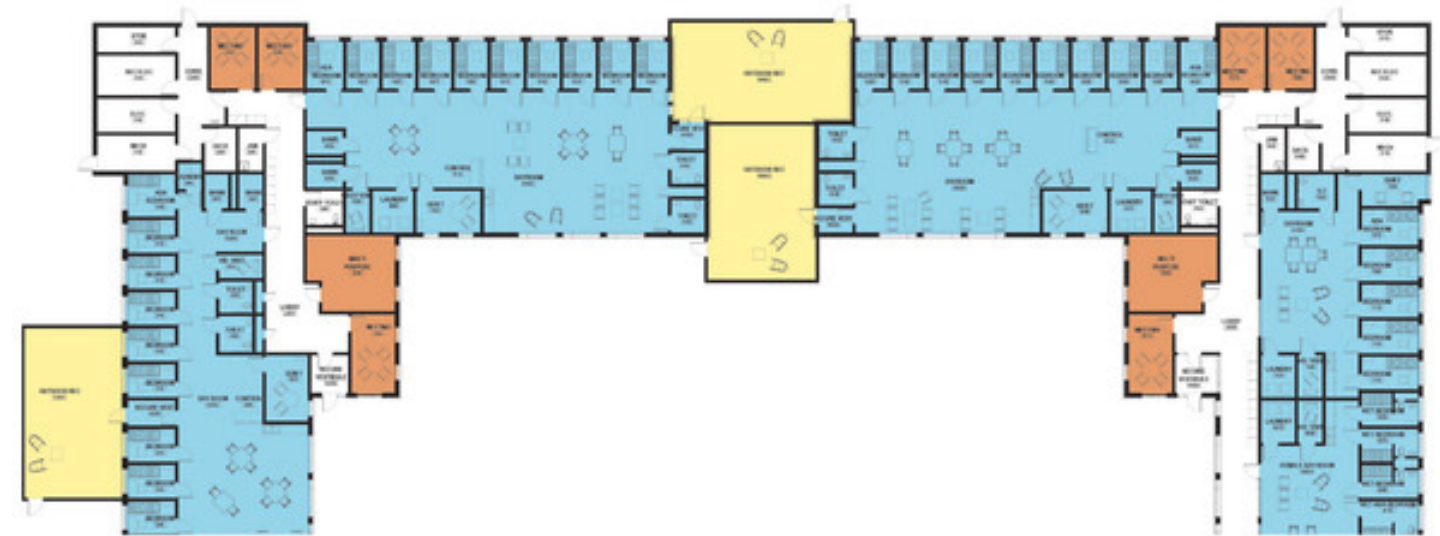
78,000 SF • \$32 million • 2019

In association with Continuum Architects & Planners, we developed an owner's project requirements (OPR), feasibility analysis study of the existing Milwaukee County Vel Phillips Juvenile Justice Center and additional sites, along with programming, conceptual plans, schematic design, furniture and equipment selection, and a final estimate. This study allowed the county to move forward on the design of a new 40-bed Secure Residential Care Center for Children and Youth (SRCCCY) to meet the county's vision.

The county's vision was to "establish a safe, positive, sustainable, and developmentally appropriate treatment environment for youth committed to the county under Wisconsin Statute Section 938.34(4m) that promotes accountability, protects the community, reduces recidivism, and returns youth to our community with the skills needed to become successful and productive citizens." The design team's approach combined the secure, safe aspects of a correctional youth detention facility with the warm, comfortable, open, and uplifting aspects of an educational/residential facility to create a unique learning environment.

The design team has worked through sequential design phases and multiple concepts with Milwaukee County — ranging from 32 to 64 beds — to meet the 2017 Wisconsin Act 185 move-in date of June 2021. The design, construction, and facility operation meets emergency rule, Wisconsin Chapter DOC 347.

After completion of the initial study and concept design in 2019, the project went on hold due to continued uncertainty over availability of state resources to realize the full vision of the law. The project has recommenced design in late 2022.





Additional Secure Housing Project List

- Baltimore Women's Detention Center
Baltimore, MD
- Buchanan County Jail
Independence, IA
- Core Annex Building Facility Program
Baltimore, MD
- Correctional Substance Abuse Treatment Facility Study
NE
- County of Riverside, East County Detention Center
Indio, CA
- Dearborn County Justice/ Public Safety Building
Lawrenceburg, IN
- Eastern Correctional Center
Princess Anne, MD
- Garland County Jail Security and Detention Consulting
Hot Springs, AR
- Hennepin County Public Safety Facility
Minneapolis, MN
- Jefferson County Law Enforcement Center
Jefferson City, TN
- Logan County Jail Study
Lincoln, IL
- Medium/Maximum-Security Unit
Jessup, MD
- Miami Correctional Facility
Peru, IN
- New Castle Correctional Center Special Needs Facility
New Castle, IN
- Northern California Women's Facility Retrofit for Re-Entry
Stockton, CA
- Oklahoma Forensic Center
Vinita, OK
- Otero County Adult Detention Center Master Plan
Albuquerque, NM
- Pinellas County Jail Master Planning Study and Design Criteria Documents
Clearwater, FL
- Rappahannock Regional Jail Expansion and Renovation
Stafford, VA
- Stanislaus County Jail and Intake Center
Modesto, CA
- State of Michigan Center for Forensic Psychiatry
Ypsilanti, MI
- Stateville Reception and Classification Center
Crest Hill, IL
- Statewide Correctional Facilities Master Plan
Baltimore, MD
- Sutter County Main Jail Expansion
Yuba City, CA
- Treatment and Detention Facility Prototype, Illinois Department of Human Services
Joliet, IL
- Wilkes County Justice Center
Wilkesboro, NC
- X-House Unit at the Stateville Correctional Center
Joliet, IL

Lancaster County Adult Detention Facility, Lincoln, NE



COURTHOUSE

Loudoun County Courts Complex

LEESBURG, VIRGINIA

92,000 SF • \$56 million • 2023

The renovation and expansion of the Loudoun County Courts Complex in downtown Leesburg, Virginia, offered us unique challenges. Encompassing a campus environment with multiple land parcels and existing structures, a highly functioning design was required to respect and enhance the history and context in which the buildings are sited. We needed to offer state-of-the-art technology, innovative solutions for sustainability, flexible design for future growth, and address context within its historic location.

The resulting courthouse design—inclusive of segregated circulation, internal and external security provisions, courtroom design, and technology—was integrated into a functional design solution that is appropriately massed and articulated to support the important civic role the courthouse plays in our urban landscape.

One of our strengths, gained from a history of working with government clients and public users, is our ability to understand the importance of every project to the end users and the local community. We channel often disparate needs, wants, and goals into a single shared vision. Our experience in civic architecture enhances our general expertise with a specialized familiarity with the unique demands of the public and associated stakeholders.



Stanley J. Roszkowski U.S. Courthouse

ROCKFORD, ILLINOIS

197,000 SF • \$88.5 million • 2011

As architect-of-record, we planned and assisted in the design of this new federal courthouse for the General Services Administration (GSA). The courthouse was designed in compliance with GSA's Design Excellence Criteria and the GSA/ISC Design Criteria for Courthouses and Federal Facilities. The building's design accommodates the 10-year space requirements of the district court and court-related agencies from date of occupancy and allows for physical expansion to accommodate the court's identified 30-year requirements and goals directly to the south of the initial structure.

The organization of the functional spaces and shape of the selected site resulted in a long, narrow building design that strongly defines what will be the western edge of a newly created civic park. The most heavily trafficked departments are located on the first two floors directly adjacent to the main entrance atrium.

LEED Gold® certified by the U.S. Green Building Council, one of the main sustainable features of the design is the extensive use of day-lighting and borrowed light throughout the interior spaces, including the courtrooms.



Chatham County Courthouse

SAVANNAH, GEORGIA

164,500 SF • \$100 million • 2024

We have provided justice planning and design services to Chatham County, Georgia, for over 20 years. Our first project was to develop a comprehensive courts master plan. We updated that plan in 2011 in advance of the design of a new courthouse. The new courthouse project includes two phases.

Phase 1 included immediate improvements to the existing courthouse to add three renovated courtrooms and chambers with courtroom technology appropriate to today's courts functions. It also included the modernization of the state courts clerk spaces, numerous code upgrades, and the complete reconfiguration and upgrades of the building entrance to improve security and circulation. This phase also included the relocation of courthouse security into the adjacent parking garage and the provision of space to screen all incoming mail, packages, and service personnel, as well as other renovations to the garage. Parking within the garage was reconfigured to improve overall campus security and circulation. A central service yard was created on the west side of the existing parking garage to serve all three campus buildings and to segregate this function. These immediate renovations corrected the most critical deficiencies, including code violations and improved ADA compliance on numerous floors.

Phase 2, the new four-story courthouse, will house 12 courtrooms and associated judicial chambers for the State and Superior Courts of Georgia. It will also house the state and superior court clerk's office, along with jury management for both courts. It sits on a gateway site in the historic district of downtown Savannah and straddles York Lane, a part of the original 1818 Oglethorpe plan for the city. The design splits the programmatic functions of the building on either side of the lane and visually carries the lane through the building's four-story atrium. The building's height, mass, and proportions relate to its contextual neighborhood and references materials found throughout the historic district in monumental buildings; exterior materials are carried into the atrium to replicate an exterior space. The project includes two tunnels connecting the new courthouse to the existing below grade: one for staff and one for in-custody detainee transfers. The building is designed to meet current flood, hurricane, and earthquake requirements and will be LEED® certified.



Sherburne County Government Center

ELK RIVER, MINNESOTA

230,000 SF • \$51 million • 2018

Our team, in conjunction with local architect BWBR, provided programming and design services for the renovation and courts expansion of the Sherburne County Government Center. The project sought to design and construct one main entry point allowing clear access to the existing building and secured access to the courts expansion building. Direct access from the jail to the new courts expansion building needed to be addressed. We did this by creating an in-custody bridge connection from the jail directly to the courts expansion building through the second level. The new courts expansion has been designed to accommodate five new courtrooms with courts administration, jury assembly, community corrections, county attorney, and central holding.



Edmund D. Edelman Children's Court

MONTEREY PARK, CALIFORNIA

10,000 SF • \$5.6 million • 2023

As only one of two courthouses in Los Angeles County devoted exclusively to cases of child abuse, welfare, and custody, overcrowding of the Edmund D. Edelman Children's Court became a critical concern.

To address service expansion needs, we redesigned a sixth-floor office space to accommodate two new courtrooms. Programming includes two judge's chambers with private restrooms, a temporary holding area, public waiting area, mediation conference rooms, and new public and staff restrooms.

While the layout is nearly identical to those of lower floors, the footprints of the new courtrooms needed to be enlarged by six feet, reducing the public waiting area, to provide ADA access compliance to courtrooms below. Additionally, the 1994 office build-out of the sixth floor included restrooms that did not meet current ADA/California Access requirements. These key factors required reconfiguration to accommodate the new assembly occupancy and access, which drove the redesign.

The smaller courtrooms are designed to be less intimidating to young victims with a low judge's bench. Trauma-sensitive details include soft lighting, smooth finishes, neutral colors, and built-in cabinetry to display teddy bears given to children to reduce stress. Support spaces adopt similar principles with child-friendly furnishings. Infrastructure for video interviews in judge's chambers allow children to testify and be viewed on a retracting television in the courtroom without being exposed to the defendant.





Additional Courthouse Project List

- A** Livingston County Law and Justice Center, Pontiac, IL
- B** Howard T. Markey National Courts Building Renovations, Washington, DC
- C** U.S. Courthouse of Southern Maryland Renovation, Greenbelt, MD
- Albert V. Bryan U.S. Courthouse Technology Upgrades Alexandria, VA
- Arlington County Courthouse Study Arlington, VA
- Boone County Courts Expansion Study Belvidere, IL
- City of Mansfield New Justice Center Planning Mansfield, OH
- City of Portsmouth Justice Facility Study and Implementation Portsmouth, VA
- County of Bucks Courthouse Siting and Massing Study Doylestown, PA
- Courts Planning at U.S. Courthouse Jackson, MS
- Design for Dearborn County Justice/Public Safety Building Lawrenceburg, IN
- Detention Design at Superior Court of California San Diego, CA
- District of Columbia Office of Administrative Hearings Washington, D.C.
- General Services Administration — Federal Building and U.S. Courthouse Urbana, IL
- General Services Administration Great Lakes Region Term Contract Chicago, IL
- General Services Administration Term Contract for U.S. Courts and U.S. Marshals Service Nationwide
- Gilbert Public Safety Building Combined Courts, Police, and Fire Complex Gilbert, AZ
- Judicial Council of California Courts Master Plan CA
- Montgomery County, Revised Space Program and Planning Study for the Judicial Annex Circuit Court Expansion Rockville, MD
- Nazario Courthouse and the Degetau Federal Office Building Hato Rey, PR
- Peoria County Courthouse Addition and Remod Peoria, IL
- Portage County Courthouse Stevens Point, WI
- Roanoke Courts Planning Roanoke, VA
- Robert C. Nix Courthouse Philadelphia, PA
- State of Maryland Administrative Office of the Courts Long Range Space Planning Services Annapolis, MD
- U.S. Courthouse Camden, NJ
- U.S. Courthouse Greenville, MS
- U.S. Courthouse and Federal Building Renovation Peoria, IL



PUBLIC SAFETY

Glen Ellyn Police Station

GLEN ELLYN, ILLINOIS

30,000 SF • \$13.5 million • 2017

In 2015, the village of Glen Ellyn decided to move its outgrown police department from the historic Civic Center downtown into a new facility, triple the size, located at the east edge of Panfish Park. The site conditions presented many challenges. Over half the site is in the 100-year floodplain with bad soil, which caused most of the functions to be organized along the west side of the property. The public parking and plaza areas act as a gateway to the improved adjacent park.

First floor program spaces include a community room, records, patrol, booking and holding, evidence processing, locker rooms, break area, and a fitness room. Second floor program spaces will include administrative and investigations, and building support spaces. Future expansion of evidence storage, patrol, and investigations has been master planned along the east side of the building. The building's massing and material palette were inspired by the natural setting of the park and include stone, glass, and fiber cement panels that look like wood. The public amenities and entrance have all been grouped along the south end of the building with an inviting, transparent two-story lobby.



Town of Vienna Police Station

VIENNA, VIRGINIA

28,000 SF • \$15 million • 2022

We designed a new 28,000-square-foot police headquarters facility for the town of Vienna, Virginia. The existing police building was demolished and the site was redeveloped to include the new police headquarters building.

The design team conducted a conceptual design workshop with the police department to determine the appropriate adjacency and stacking relationships between the functional departments. This exercise resulted in three options, which were review by the police department before selecting a final option.

As part of the police facility design, it was important to understand neighborhood and site context. It was also key to study existing architecture in the town, as well as identify any design precedents that might apply to the police facility. With this in mind, we conducted a series of work sessions with a goal of working collaboratively with municipal and community stakeholders to develop a design direction for the new police station that would acknowledge context while enhancing civic pride.



Killeen Police Headquarters

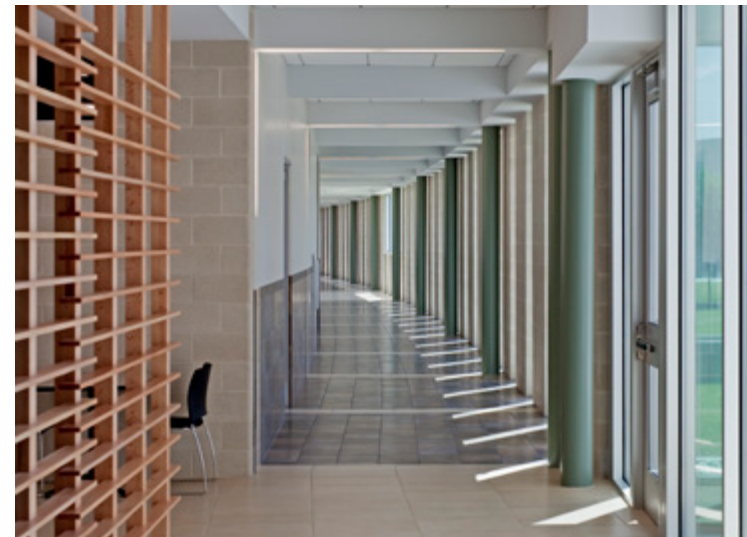
KILLEEN, TEXAS

81,700 SF • \$22.8 million • 2010

This LEED® Gold facility represents a sustainable, inviting, contextual yet modern civic building that has instilled a new sense of pride for the city and its police force. The prominent use of leuders limestone helps give the building a strong sense of place for the community. The new facility brings together seven fragmented and remote police operations under one roof. As a regional resource, it provides community and training rooms that reinforce the police department's mission of community outreach.

The south Killeen site is part of the regional Hill Country topography. The design takes advantage of the sloping terrain by nestling the building into the hillside. This sensitive siting achieves a critical security separation between public and staff entry points by allowing them to be on different levels, yet on the same axis. The angular, stone clad volume along the street serves as a reminder of the limestone overhangs found throughout the region. The design evokes the vernacular of the area with native limestone cladding, sandblasted concrete plinths, and metal panels. The landscaping features regional/native grasses and drought-resistant plants.

The project team focused on reducing energy consumption to achieve a high performance building design. Interior roller shades were installed along all west and south window openings to control heat gain and glare, while still allowing filtered daylight into spaces. To meet the heating and cooling needs of the space, 365 geothermal wells, each 250 feet deep, were included in the design.



Countryside Net Zero Energy Designed City Hall and Police Headquarters

COUNTRYSIDE, ILLINOIS

34,900 SF • \$21.8 million • 2019

In addition to supporting the sustainable features of this LEED Silver® and Net Zero project, our design for the new local government building helped deliver project goals of increasing staff efficiency while maintaining a secure perimeter between public and private city functions. The building also serves as a storm shelter and provides a variety of meeting rooms for community group events.

The L-shaped design divides police department functions on the north and city hall functions on the south with a shared public amenities core. A centrally located two-story lobby welcomes the public and serves as an access point for both police and city hall functions.

The first-floor police wing consists of records, a patrol suite, staff break area, evidence processing, booking and holding, and locker rooms. The first-floor city hall wing includes an open community development suite, executive conference room, and 1 ½-story council chambers with dais seating for 12. The grand hall corridor provides public access to council chambers through an array of glass and seating bump-outs. The corridor features exhibits of historic Route 66 and the history of Countryside. The second floor north side includes police administration and investigations, and the south side features an administration suite, break area, and green roof access.

Net Zero energy design was achieved via integrated design and close collaboration among our architects, engineers, and consultants.



Dallas Police Headquarters

DALLAS, TEXAS

352,000 SF • \$52 million • 2004

As the city of Dallas' first LEED® Silver project, the Jack Evans Police Headquarters is located in an area of the city undergoing revitalization. The six-story structure houses the central administration offices, investigations division, records, personnel, identification laboratory, automated fingerprint/identification systems, and a police museum. Constructed on a three-acre brownfield site, a central courtyard introduces natural light into the core of the building and a bridge connects to an existing 1,200-car parking structure.

We provided a perimeter distance to the road for blast mitigation and incorporated blast film to the lower level windows to limit flying glass debris. Bollards were designed to prevent vehicles from being driven into the building along with vehicle barricades that were integrated into the access road behind the facility.



Hillsborough County Emergency Operations Center

TAMPA, FLORIDA

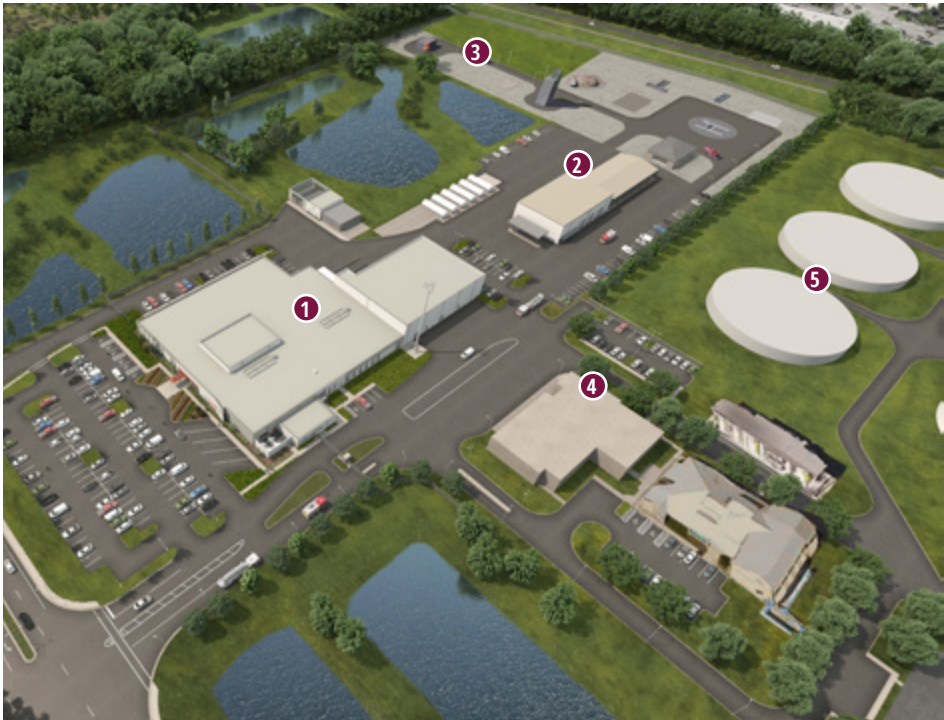
91,250 SF • \$24 million • 2016

This new emergency operations facility is located on a 19-acre site. The program includes five major components; the incident command center, dispatch command, information technology services, fleet services repair, and fire-rescue training. Other county functions include a 311 call center, radio facility, and warehouse. The fire training facility is specially designed to meet the Florida State Fire College Certification and is a 24/7 facility. Additionally, it is designed to accommodate 276 personnel during incident activation. The building and structure are hardened and designed to be resilient against the coastline hurricanes, including 200-mile-per-hour winds.

The project was developed as a design-build based on a limited set of criteria documents issued by the county, increasingly challenged by the pressure to deliver the project on a restricted budget and a compressed 22-month design and construction schedule. This project required creative and new ideas in order to simplify the criteria package while increasing the level of design, in both the enhancement of users experience and the civic presentation of the building.



- 1 Emergency Operations
- 2 Fire — Rescue Fleet Repair
- 3 Fire — Rescue Training
- 4 Future Environmental Lab
- 5 Existing Water Treatment Facility





Additional Public Safety Project List

- A** Lawton Public Safety Facility, Lawton, OK
- B** Public Safety Building, Gilbert, AZ
- C** Alexandria Police Headquarters, Alexandria, VA
 - City/County Public Safety Building Expansion Danville, IL
 - City Hall, Police, and Courts Study Wichita Falls, TX
 - City Hall and Police Department Countryside, IL
 - City Hall Renovation/Addition Saginaw, TX
 - Coppell Justice Center Coppell, TX
 - Decatur Fire Department Building Program Decatur, IL
 - Department of Public Safety, West Facility Southlake, TX
 - Department of Public Safety Renovation Highland Park, TX
- D** Police Substation 2, Denver, CO
 - Emergency Operations Center Hillsborough County, FL
 - Loudoun County Public Safety Building Leesburg, VA
 - Loudoun County Sheriff Administration Ashburn, VA
 - Master Services Agreement Orange County Sheriff-Coroner Department CA
 - Municipal Complex Springdale, AR
 - New Police Facility Moline, IL
 - New Police Facility Saginaw, TX
 - New Police Headquarters and Senior Center Fowler, CA
 - New Police Station Harvard, IL
 - Police, Jail, and Municipal Court Euless, TX
 - Police and Courts Headquarters Tolleson, AZ
- Police Department Grapevine, TX
- Police Department Planning Study Benicia, CA
- Police Headquarters Peoria, IL
- Police Station Deer Park, TX
- Police Station Niles, IL
- Police Station Vienna, VA
- Police Substations Denver, CO
- Police Training Facility Space Needs Study Temple, TX
- Public Safety Facility Sand Spring, OK
- Training Center Expansion Leesburg, VA
- Tri-City Police Training Facility Plano, TX
- Village Hall and Police Department Romeoville, IL
- West Ox Police Heliport Fairfax County, VA



SECURITY AND
TECHNOLOGY

Security and Technology

We have credentialed professionals serving internal and external architectural clients and end users across the U.S. Our portfolio includes completed projects in public safety, secure housing, courts, and other government clients. We offer comprehensive technology design services for all low-voltage disciplines including security electronics, detention, telecommunications, and audio visual systems. Our group of experts provide services in all phases of design from feasibility studies and preliminary design to complete construction documents. We also offer construction administration and system commissioning services to manage our designs all the way through implementation.



Telecommunications Applications

- Category 6 cabling
- Customer-owned outside cable plant
- Distributed antenna systems
- Fiber optic network
- Local exchange carrier coordination
- MATV/CATV distribution
- Wireless network



Audio/Visual Applications

- 911 and EOC spaces
- Auditoriums
- Briefing rooms
- Classrooms
- Command centers
- Computer labs
- Conference rooms
- Courtrooms
- Gymnasiums
- Interactive presentation systems
- Intercom/page/clock
- Jury assemblies
- Paging systems
- Recreation spaces
- Training rooms
- Video arraignment
- Video conferencing
- Voice lift/sound reinforcement



Security and Detention Applications

- Analog and IP based intercom/paging systems
- Analog and IP based interview recording systems
- Analog and IP based video visitation systems
- Building monitoring
- Crash barriers
- Detention furniture and furnishings
- Detention hardware
- Digital and network based video recording systems
- Emergency call pedestals
- Graphic control panels and industrial controllers
- Gate automation
- Intrusion detection systems
- IP and analog based video surveillance systems
- Microwave and shaker based perimeter
- Non-lethal electric fence systems
- Programmable logic controllers
- Proximity-/biometric-based access control systems
- RF and infrared personal duress systems
- Security/crash-rated fencing and gates
- Touch screen graphical user interface systems

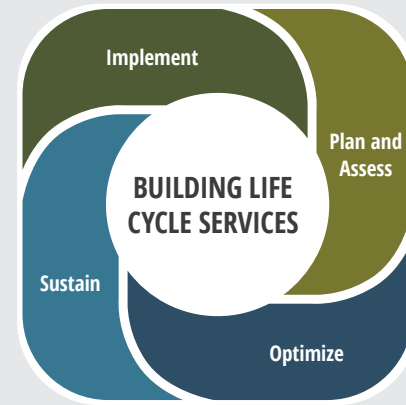




SUSTAINABILITY

Building Life Cycle Services

- Automated controls, smart building technology, and system integration
- Co-generation
- Design-build energy efficient upgrades energy engineering
- Funding and utility rebate
- Geoexchange
- High-performance system design
- HVAC upgrades including air handlers, VAV, chillers and boilers
- Infrastructure master planning
- Project and construction management
- Renewable/alternative systems, including solar photovoltaic
- Turnkey design-build services



PLAN AND ASSESS:

- Controls programming
- Operations and maintenance
- Non-capital intensive measures

SUSTAIN:

- Sustainable operations
- Water conservation

OPTIMIZE:

- Design-build
- Equipment replacement
- Controls upgrades
- Construction management
- Energy savings performance contracts

IMPLEMENT:

- Energy audits
- Facility condition assessments
- Master plans
- LEED® EBOM
- Energy Star certification

Sustainable Return on Investment (SROI)

Our sustainable vision is based on a holistic and cohesive approach that crosses all disciplines and accounts for stakeholders. We use an all-encompassing sustainable design process to guide the programmatic design while addressing energy efficiency measures and sustainable best-practice measures. These steps help us meet or exceed LEED® or other similar sustainable requirements.

We understand that moving from subjective discussion about green benefits to quantitative business cases that monetize social and environmental impacts offers a new way of thinking. This is why we offer a life cycle cost analysis approach based on the triple bottom line economic framework, referred to as the sustainable return on investment (SROI).

The SROI methodology enhances our sustainable design approach by providing a quantitative business case for sustainable strategies and helps evaluate a project's life cycle cost analysis requirement. It provides a powerful basis for designed-in sustainability. Additionally, it helps guide decisions and justifications regarding sustainability designations.

The SROI's business case can be used for performance-measurement and accountability. Its approach quantifies costs, benefits, and returns on investment in relation to a baseline project approach. Additionally, it can be revised as the project progresses to reveal savings in capital, operating, and maintenance costs. Finally, the SROI can showcase annual benefits associated with improved environmental interests and greenhouse gas emission reduction.





CONTACT

James L. Beight, AIA, LEED AP
DIRECTOR OF JUSTICE ARCHITECTURE

jbeight@dewberry.com
703.698.9052