

D I M E N S I O N S ®

A N N U A L R E V I E W

2025






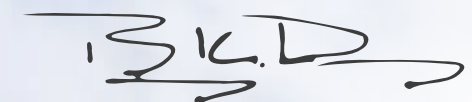
OUR COMMITMENT

Every year at our Fall Strategic Planning Meeting, I'm invited to give a talk. Often I reflect on Dewberry's culture, which we call Dewberry at Work, and how it supports those things we care most about: our clients, the relationships we build in our industry, and how we deliver projects for the benefit of our shared communities.

This year I prepared for my talk by reflecting on the future—an exercise not for the faint of heart! In six short years, Dewberry will celebrate its 75th anniversary. I believe we have the clues for who we will be in 2031 captured in this issue of *Dimensions*. We will continue to work at an efficient pace, leaning on the expertise of our teams and technological advancements to deliver for our clients. You'll read how we assisted clients with improving traffic flow, alleviating congestion, and improving multimodal integration on roadways from New Jersey to Northern California to Florida. We helped communities consider new approaches for rehabilitating water systems and protecting this limited resource. We've also aided agencies in setting standards and increasing accuracy in data sets to benefit communities nationwide.

I also challenged our leaders to think beyond 2031 and start preparing for Dewberry's 100th anniversary. Envisioning this future can be daunting. I can imagine countless directions and advancements for our clients and communities. However, there's one thing I can predict. All we need to do now is determine who among us has the energy, vision, and potential to lead this dynamic industry. We must continue to mentor and help prepare them to be their best selves. If we do this one thing, the future is secure.

At Dewberry, we are going to continue our development of future leaders, impart what we've learned, and treat them as if we intend to turn over our industry to them, because that is exactly what we're going to do. I'm excited to do my part to help prepare tomorrow's leadership, setting the expectation with each that Dewberry will always deliver quality results, build relationships, and stay humble and grateful for the opportunities that come our way. 



BARRY K. DEWBERRY
Executive Chairman

DIMENSIONS® ANNUAL REVIEW 2025

EXECUTIVE CHAIRMAN
Barry K. Dewberry

VICE CHAIRMAN
Larry L. Melton, Jr.

CHIEF EXECUTIVE OFFICER
Donald E. Stone, Jr.

BOARD OF DIRECTORS
FROM LEFT TO RIGHT: Michael Dewberry II, Thomas Greenspon,
Larry L. Melton, Jr., Karen S. Grand Pré, Barry K. Dewberry,
Donald E. Stone, Jr., Geraldine Knatz, Thomas L. Dewberry,
and William T. Boston.



DIMENSIONS® is published by Dewberry for the clients, associates, and employees of Dewberry.

Contact Molly Johnson with comments at media@dewberry.com

©2026 Dewberry®. All rights reserved. DIMENSIONS® and  are registered trademarks of Dewberry Engineers Inc.

OUR HEADQUARTERS
8401 Arlington Boulevard
Fairfax, Virginia 22031-4666
703.849.0100

Craig Johnson, PE, 24GE03157500
Dewberry Engineers Inc., 24GA8047600

D www.dewberry.com
in [/company/dewberry/](https://company.dewberry/)
 [@dewberryatwork](https://www.instagram.com/dewberryatwork)
 [/user/TheDewberryWay](https://www.youtube.com/user/TheDewberryWay)

IN THIS ISSUE

1

Investing in Future Leaders to Support Our Communities

3

2025 In Review: Notable Projects
Take a look at project highlights from across the country

21

2025 Recognition for Our Communities and Projects

27

Dewberry Receives CMMC Level 2 Certification

OUR MISSION

Dewberry is a nationwide firm of planning, design, and construction professionals. We create responsible and innovative solutions for those who own, operate, and maintain natural and built environments. We value lasting relationships, achieving our clients’ visions, and celebrating in their success.

ON THE COVER

Monument Creek at Monument Street Stream Stabilization
Colorado Springs, Colorado

OUR VISION


CREATE VALUE FOR OUR CLIENTS.
IMPROVE OUR COMMUNITIES.
EMPOWER OUR EMPLOYEES.
EXPAND OUR REACH.

INVESTING IN FUTURE LEADERS TO SUPPORT OUR COMMUNITIES

Raleigh, North Carolina, is growing. Home to more than 2.3 million people, the greater Raleigh area's expansion is driven by a strong economy, multiple, first-rate universities, and the Research Triangle Park. For Dewberry's Raleigh-based professionals, the Triangle, as the area is called, presents significant opportunity to contribute to the area's development. Working on technically complex projects with clients in the immediate area and beyond is advancing this team's technical expertise and operational acumen. With the growth of the region comes the need for the firm's Raleigh office to expand as well, leading to opportunities for staff to mentor new team members and help with recruiting efforts.

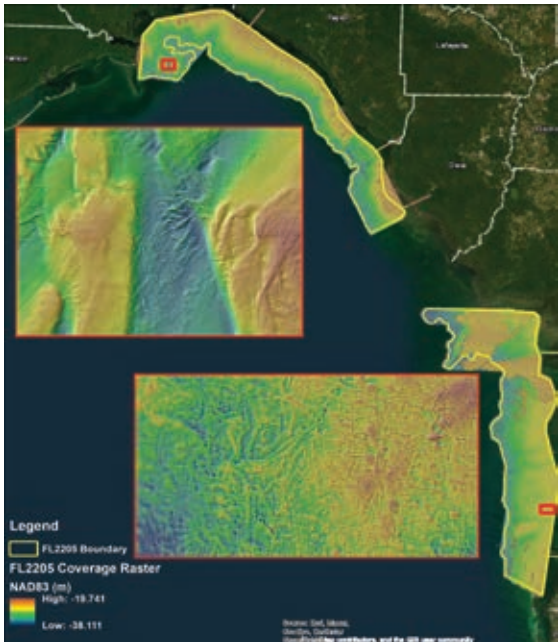
"With the growth that this area is seeing, our success is highly dependent on our ability to attract and retain top talent," says Vice President Matt West. "We've grown by more than 200% in staff in the last 10 years. Market expansion is creating opportunities for our team to grow into leadership roles to support our client service and development, recruiting efforts, technical expertise, and employee resource groups. Additionally, we depend on our staff to engage with the next generation of talent and help lead our relationships with NC State, Wake Tech, Duke, and NC Central."

Associate Vice President Brandon Whelan says, "Providing one-on-one mentorship opportunities is key to keeping our staff engaged. We've been successfully developing junior staff by creating mentorship relationships that grow their careers, create leadership opportunities, and lead to a transfer of knowledge, which we aim to do in a practical way. For example, we send senior and junior staff into the field together to get experience tackling real-world engineering challenges. Because the junior staff typically presents lessons learned to the rest of the team, we're able to foster this culture of knowledge transfer. Plus, this helps further our team's understanding of the industry, and allows younger staff to refine presentation skills."

Whether it's helping energy and utility companies become more resilient, delivering complex supervisory control and data acquisition (SCADA) upgrades for water/wastewater facilities via design-build delivery, engaging in strategic site design, or expanding a university healthcare system's facilities to meet the increasing demands brought on by growth, Dewberry's team of professionals deliver solutions that are helping the greater Raleigh area become one of the nation's most highly sought after places to live. Operating as a community-based practice with professionals who see the impact they make on their community, the Raleigh office is a place where individuals advance their careers by contributing to real-world engineering, design, and construction solutions. 



2025 IN REVIEW: NOTABLE PROJECTS



BIG BEND TOPOBATHY LIDAR AND CONCURRENT IMAGERY COLLECTION AND PROCESSING Florida

We completed our first fully offshore topobathymetric lidar and imagery collection mapping project in Florida's Big Bend region, collecting high-resolution data across 1,375 square miles at depths of over 34 feet. Using our CZMIL SuperNova sensor, our team overcame water clarity challenges and improved refraction correction. The delivered datasets support the National Oceanic and Atmospheric Administration's (NOAA) shoreline mapping initiatives.

MCINTOSH PRESERVE INTEGRATED WATER WETLANDS PARK Plant City, Florida

To sustain and protect the Plant City community's water and the environment, we planned and engineered a 170-acre wetland treatment system that reuses 3.0 MGD of advanced treated wastewater and results in an annual net reduction of more than 7,000 pounds of nitrogen from natural waterbodies. Other site amenities include two miles of ADA-compliant recreational trails, a 52-foot-high scenic vista, and a 25-foot-high wildlife viewing platform.

METROPOLITAN TRANSPORTATION AUTHORITY BRIDGES AND TUNNELS' ROCKAWAYS BRIDGES REHABILITATION Brooklyn and Queens, New York

The Cross Bay and Marine Parkway Bridges provide vital connections to the Rockaway Peninsula. To extend their useful life and provide enhancements, we strengthened the navigation span with a carbon-fiber reinforced-polymer wrap, implemented a redundant support system, and replaced the lift span finger joints. We also installed an Americans with Disabilities Act-compliant pedestrian ramp.





ROUTE 295/ROUTE 42, MISSING MOVES

New Jersey

An evaluation of the interchange network by the New Jersey Department of Transportation identified several operational deficiencies, including the lack of direct connectivity between Route 295 and Route 42. We designed ramps, each exceeding a half mile in length, to link the two roadways. The new ramps improve traffic flow and alleviate congestion on local roads.

PHOTO: INTERVISION NEW MEDIA.COM, INC. (ROGER SWINGLE)



IVANHOE WATER SYSTEM

Sampson County, North Carolina

Ivanhoe, North Carolina, is a historically underserved area vulnerable to flooding. In collaboration with the county and local community, we delivered grant management services, survey, design, permitting, and bidding support for a resilient water supply project for the county. Using trenchless pipe installation methods, our design extended a new water main to the area while minimizing impacts to wetlands and streams. This project connects local residents to a clean, resilient, water supply system.

VILLAGE OF HANOVER PARK FIRE STATION #16

Hanover Park, Illinois

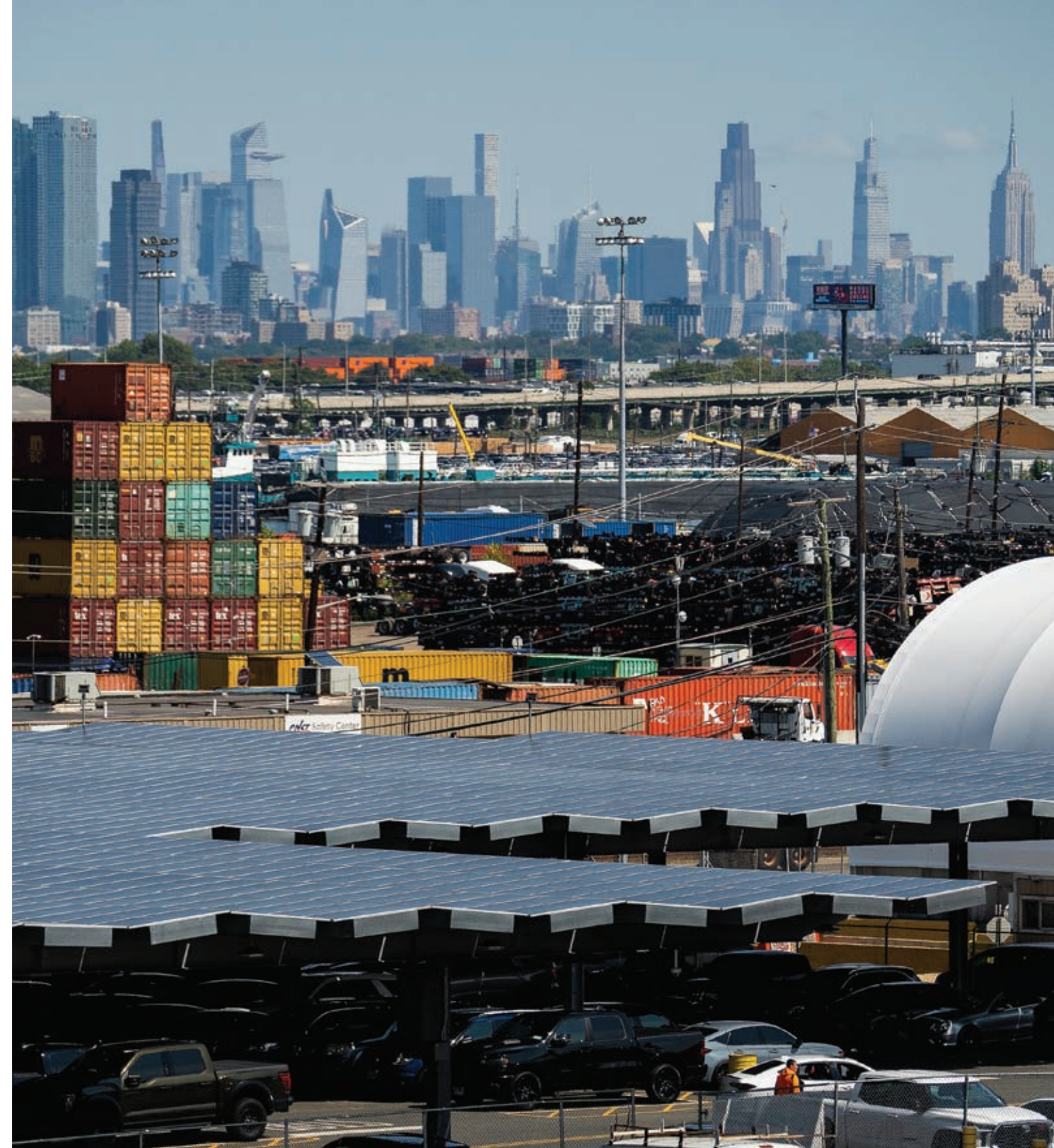
Emphasizing both physical and mental health, our design for the Hanover Park Fire Station includes an outdoor patio, communal kitchen, and apparatus bay equipped with filtered air systems. Inside the station, we created a cleanliness pathway for firefighters to remove toxins from their gear, contributing to firefighter wellness.



HIGHGATE AT LIVINGSTON

Livingston, New Jersey

To support Livingston's commitment to affordable housing, we redeveloped a former office building property into a new 53,900-square-foot residential complex with 169 units. The 14-acre property features a courtyard, electric vehicle charging, landscaped and vegetated areas, a maintenance building, and recreational spaces. We performed site/civil engineering and landscape architecture services, and obtained New Jersey Department of Environmental Protection permitting.



PORT NEWARK CONTAINER TERMINAL SOLAR FACILITY

Newark, New Jersey

The Port Newark Container Terminal is the East Coast's busiest and largest port. To reduce emissions and improve air quality, we served as engineer of record for a 7.2-megawatt solar facility responsible for 50% of the terminal's annual electrical power. As the only global port to integrate large-scale solar power generation, the facility is estimated to save 8,107 metric tons of carbon dioxide per year.



DRY CREEK BRIDGE REPLACEMENT AT BURROUGH VALLEY ROAD

Fresno, California

Fresno County's former 98-year-old bridge was flagged as functionally obsolete due to its narrow width and hydraulic deficiencies. To meet 100-year storm and fish passage requirements, we replaced the bridge, increased the length, and raised the profile. We also upgraded the Tollhouse Road intersection's geometrics to allow safe turning movements of semitrucks and replaced an adjacent failing concrete box culvert.



EASTERN GOOCHLAND FORCE MAIN REHABILITATION AND REPLACEMENT

Goochland County, Virginia

Following a force main rupture in 2021, we worked with Goochland County to rehabilitate its pipeline and prevent future failures. Using innovative trenchless technology, we designed a sliplining approach that will meet the county's needs through 2045.

CHATHAM COUNTY COURTHOUSE

Savannah, Georgia

The LEED Certified® 155,325-square-foot courthouse includes 12 new courtrooms and associated judicial chambers for Georgia's State and Superior Courts. We integrated our design with the existing historical architecture, reconnecting with the original Oglethorpe Plan for Savannah's historic district.

PHOTO: ©JUDY DAVIS, ARCHITECTURAL PHOTOGRAPHER



OVERLOOK MEDICAL CENTER MASTER PLAN IMPLEMENTATION

Summit, New Jersey

Atlantic Health System's "Overlook Ahead" master plan aimed to improve the medical center's campus without interruption to daily operations. As land planner and engineer, we supported implementation and logistics of a new staff garage and pediatric emergency department, expansion of the campus' East Building, and redundant backup power. Our design addressed pedestrian circulation, utility services, and emergency vehicle access points.



COASTAL ADAPTATION AND RESILIENCE PLAN

Oyster Village, Virginia

In partnership with the Nature Conservancy and Northampton County, Virginia, we created a coastal adaptation and resilience plan for Oyster Village, a water-dependent community struggling with increased flooding. Our resilience team developed short- to long-term flood risk reduction strategies that aligned with community character and preference. We continue to support strategy development by providing engineering design for awarded grants.



NORTH CAROLINA FOREST SERVICE FACILITIES CONDITION ASSESSMENT

North Carolina

In order to determine all of the North Carolina Forest Services buildings' current conditions and estimate remaining useful life, we performed facility condition assessments across 24 counties, evaluating more than 180 buildings and 147,043 total square feet. We developed a seven-year repair and renovation improvement plan based on our findings and our client's priorities.



**OSWEGOLAND PARK DISTRICT GROVE
ADMINISTRATION AND OPERATIONS CENTER**
Oswego, Illinois

The former Oswegoland Park District Prairie Point Center lacked natural light and sufficient teaming space, and presented challenges for day-to-day operations. We designed a new 16,150-square-foot operations building and a 12,700-square-foot administration building that features an exposed wood structure and open office spaces to support flexibility as the needs of the district change.



FREEPORT WASTEWATER TREATMENT PLANT EXPANSION
Freeport, Florida

To address the effects of rapid growth, we expanded Freeport's existing wastewater treatment plant from a capacity of 0.6 million gallons per day (MGD) to 2.0 MGD across two phases. The upgraded facility allows for long-term flexibility to meet the growing community's needs.

BIG BEND ROAD

Gibsonton, Florida

As part of a design-build team with Skanska, we widened Big Bend Road to six lanes, designed new interchange ramp connections, and implemented a new roundabout at the realigned intersection. These improvements significantly reduce traffic delays, and the addition of pedestrian tunnels and bike lanes increase accessibility for community residents.

PHOTO: DRMP



MONUMENT CREEK AT MONUMENT STREET STREAM STABILIZATION

Colorado Springs, Colorado

To protect critical utilities and historic structures at risk from over 50 years of erosion and degradation, we worked with Colorado Springs Utilities and Colorado Springs Parks, Recreation and Cultural Services to design channel improvements for Monument Creek's profile and bank stability. We installed boulder drop structures, bendway weirs, and native vegetation to redirect flow from eroded areas and reduce flood risk.



USGS 3D NATIONAL TOPOGRAPHY MODEL STRATEGIC PLAN: PHASE 2

Nationwide

Through interviews with key U.S. Geological Survey (USGS) leaders and data we collected in previous studies, we assisted USGS to define the next generation 3D Elevation Program (3DEP). Data collected through 3DEP will result in an estimated \$7.6 billion in annual benefits from increased accuracy and usability of nationwide elevation data.



LEESBURG POLICE STATION RENOVATION AND ADDITION

Leesburg, Virginia

Our design for the new Leesburg Police station addresses critical operational, security, and technology needs of a modern police force. The project involved redeveloping the existing site for a new 14,500-square-foot addition and 21,000-square-foot renovation, secure and non-secure parking, and related site improvements. The project was phased, allowing the city to occupy the existing space during construction. Features include new security and audio/visual systems, energy-efficient lighting, and a courtyard wellness space.

PHOTO: ©JUDY DAVIS, ARCHITECTURAL PHOTOGRAPHER

BOUNDARY CHANNEL DRIVE AT I-395 INTERCHANGE

Arlington, Virginia

As part of the Shirley-Dewberry design-build team, we served as lead designer for the interchange improvements. By reconfiguring the existing cloverleaf interchange and reducing lanes, the project improves safety and operations for drivers, pedestrians, and cyclists. The auxiliary lane extension, roundabouts, sidewalks, and shared-use paths provide easier access to the area's community facilities, national parks and monuments, and recreational amenities.

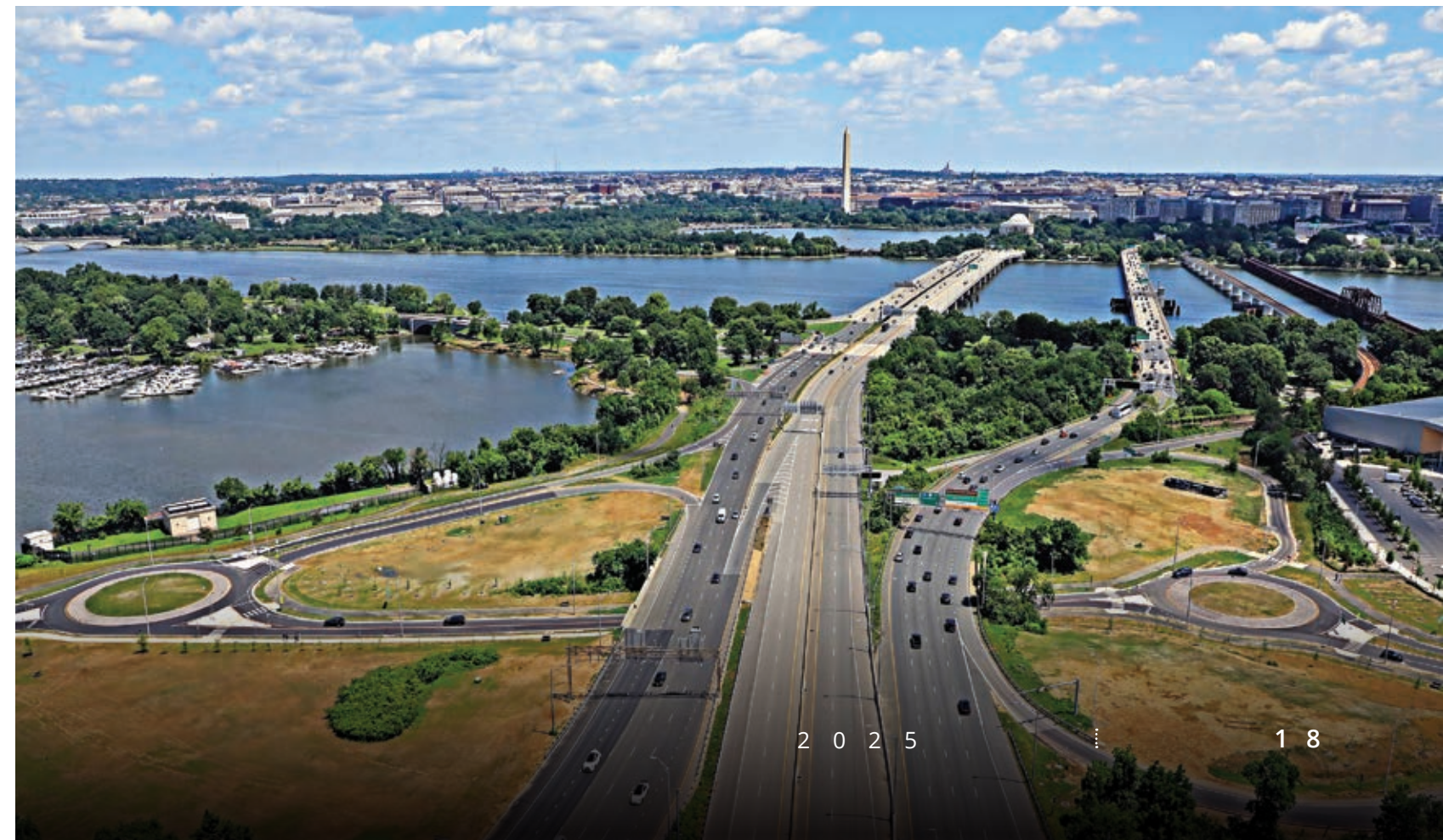
PHOTO: SHIRLEY CONTRACTING COMPANY, LLC



CARBON REDUCTION STRATEGY AND PHOTOVOLTAIC ASSESSMENT

Connecticut

Transportation is responsible for nearly 40% of Connecticut's greenhouse gas emissions. As part of the Connecticut Department of Transportation's effort to reduce emissions and promote efficient transportation, we prepared a report that established an emissions baseline, analyzed construction of a \$245 million highway widening project, identified and prioritized carbon reduction strategies, and outlined steps for implementation.



DAVIDSON COLLEGE NEW FOOTBALL STADIUM

Davidson, North Carolina

For Davidson College's new 6,000-seat football stadium, we provided surveying, site construction design, permitting, and construction administration support, delivering multiple stadium configurations, turf options, and a detailed flood study. We worked closely with the college to fulfill its vision for the venue of inspiring school spirit among students, faculty, alumni, and the surrounding community.



ENVISION VERIFICATION FOR TIMES SQUARE SHUTTLE IMPROVEMENTS

New York, New York

For the Metropolitan Transportation Authority's first Envision-verified project, we supported Envision verification by outlining shuttle improvements designed to increase subway ridership and reduce reliance on modes of transportation with high carbon footprints. Over its operational life, the project is estimated to increase ridership by 50% and reduce greenhouse gas emissions by 26%.

2025 RECOGNITION FOR OUR COMMUNITIES AND PROJECTS

DEWBERRY

- ★ AEC Building a Better World Award, PSMJ Resources, Inc.
- ★ Favorite Architectural Firm, 2025 RAVE Awards, *Showcase Magazine*
- ★ Top Employers for Interns, Virginia Talent + Opportunity Partnership

PICTURED BELOW

City College of New York
Shepard Hall



COMMUNITY FACILITIES

North Carolina
State Capitol Building
Raleigh, North Carolina

- ★ **Pinnacle Award,**
Best Building, Carolinas Associated
General Contractors of America

EDUCATION

City College of New York
Shepard Hall
New York, New York

- ★ **Diamond Award, Building/
Technology Systems Category,**
Engineering Excellence Awards,
American Council of Engineering
Companies (ACEC) New York

Murray-Massenburg
Elementary School
Durham, North Carolina

- ★ **Best K-12, Best Projects
Award Program,**
*Engineering News-Record
Texas and Southeast*
- ★ **Merit Award,**
Associated Builders and Contractors
of the Carolinas

RISK, RESPONSE, RECOVERY, AND RESILIENCE

Henrico County FEMA Flood Map
Update Outreach
Henrico County, Virginia

- ★ **Outreach/Media Award,**
Association for State Floodplain
Managers

TRANSPORTATION

Big Bend Road Design-Build
Gibson, Florida

- ★ **Best in Construction Award,
Interchange Category,**
Florida Transportation
Builders Association
- ★ **Florida Region Design-Build
Honor Award, Transportation
Roadways Category,**
Design-Build Institute of America
(DBIA) Florida Region

PICTURED BELOW

Pelham Parkway Reconstruction
Phases 1 and 2

**Boundary Channel Drive
at I-395 Interchange**
Arlington, Virginia

- ★ **Engineering Honorable
Mention Award,**
Virginia Transportation
Construction Alliance (VTCA)
- ★ **Infrastructure Award,**
Heavy Construction
Contractors Association
- ★ **Mid-Atlantic Nominee for
National Project of the Year,**
American Society of Highway
Engineers (ASHE)
- ★ **Merit Award,**
Engineering Excellence Awards,
ACEC Virginia

**Bridge Deck Reconstruction
for the Newark Bay Bridge**
Newark and Jersey City, New Jersey

- ★ **Distinguished Engineering Award,**
New Jersey Alliance for Action

**Carbon Reduction Strategy
and Photovoltaic Assessment**
Connecticut

- ★ **Distinguished Award,**
Engineering Excellence Awards,
ACEC New Jersey
- ★ **Gold Award,**
Engineering Excellence Awards,
ACEC New York



PICTURED ABOVE

Wildwood Channels
Maintenance Dredging

**Wildwood Channels
Maintenance Dredging**
Cape May County, New Jersey

- ★ **Best Use of Technology
and Innovation,**
Northeast Association of State
Transportation Officials (NASTO)

**Pelham Parkway Reconstruction
Phases 1 and 2**
New York, New York

- ★ **Honor Award, Large Project of
the Year Over \$40 Million Category,**
ASHE New York Metro
- ★ **Platinum Award,
Transportation Category,**
Engineering Excellence Awards,
ACEC New York

**Replacement of the Fair Lawn
(Fifth) Avenue Bridge over the
Passaic River**
Passaic County, New Jersey

- ★ **Project of the Year,
Transportation – Small Category,**
American Society of Civil Engineers
New Jersey
- ★ **2025 Distinguished
Engineering Award,**
New Jersey Alliance for Action

Rockaway Bridges Design-Build Rehabilitation Project
New York, New York

- ★ **Gold Award, Structural Systems Category,**
2025 Engineering Excellence Awards, ACEC New York
- ★ **Small Project of the Year Award, Under \$40 Million Category,**
ASHE New York Metro

Route 1 Hard Shoulder Running
South Brunswick, New Jersey

- ★ **Best Use of Technology and Innovation Award,**
NASTO

Route 295/Route 42, Missing Moves
Camden and Gloucester Counties, New Jersey

- ★ **Honor Award, Large Project Category,**
Engineering Excellence Awards, ACEC New Jersey
- ★ **National Recognition Award,**
Engineering Excellence Awards, ACEC
- ★ **Public Project Award,**
New Jersey Society of Professional Engineers

Route 7 Corridor Improvements
Fairfax County, Virginia

- ★ **Environmental Performance Program Award,**
VTCA
- ★ **Honor Award,**
ACEC Virginia
- ★ **Honorable Mention, Greater Than \$10 Million Design-Build Category,**
VTCA
- ★ **National Design-Build Project/Team Merit Award,**
Transportation Category, DBIA

Sycamore Trail Phase 2 Pedestrian Bridge
Sacramento, California

- ★ **Project of the Year Award,**
2025 American Public Works Association Sacramento Chapter

WATER

PICTURED BELOW
James River Crossing

PHOTO: GARNEY CONSTRUCTION

Eastern Goochland Force Main Rehabilitation and Replacement
Goochland County, Virginia

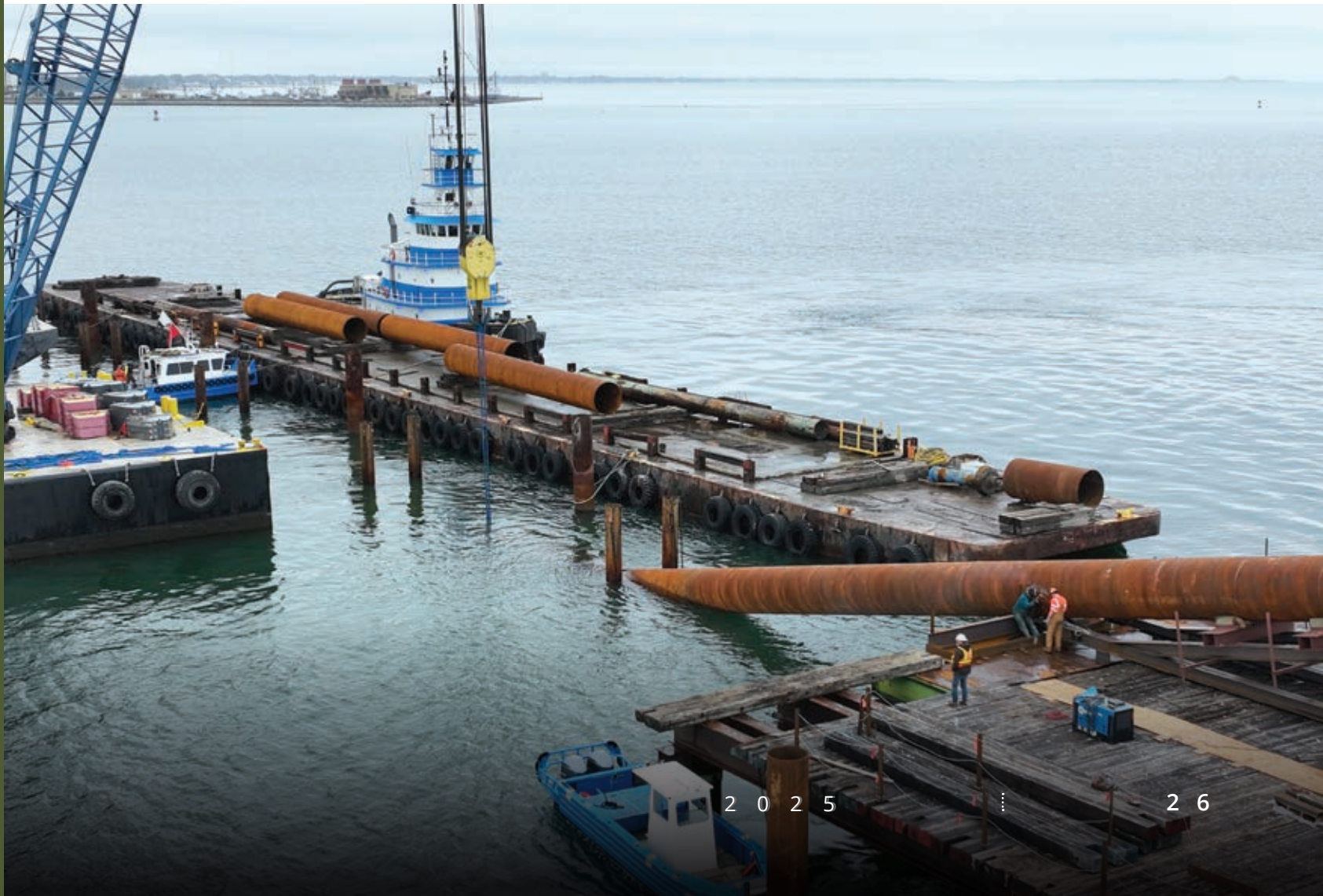
- ★ **Merit Award Winner,**
ACEC Metro Washington

James River Crossing Sewage Force Main Horizontal Directional Drill
Newport News to Suffolk, Virginia

- ★ **Engineering Excellence Award,**
Engineering Club of Hampton Roads
- ★ **Grand Award,**
Engineering Excellence Awards, ACEC Virginia
- ★ **Project of the Year,**
Plastics Pipe Institute

Living Shoreline Restoration at Lamberts Point
Norfolk, Virginia

- ★ **Citizens Award, Best Sustainability Program,**
U.S. Chamber of Commerce Foundation





8401 Arlington Boulevard
Fairfax, Virginia 22031-4666
Address service requested

PRSR STD
U.S. POSTAGE
PAID
Elizabethtown, PA
PERMIT NO. 61



www.dewberry.com

These eco-friendly, clear envelopes are
made of 100% compostable materials.



DEWBERRY RECEIVES CMMC LEVEL 2 CERTIFICATION

As cyber threats continue to evolve, the Department of Defense (DoD) developed the Cybersecurity Maturity Model Certification (CMMC)—a program designed to verify contractors and subcontractors have implemented required security measures to safeguard Federal Contract Information (FCI) and Controlled Unclassified Information (CUI) across the defense industrial base supply chain. The CMMC program provides assurance to federal clients that their partners are protecting sensitive data.

This year, Dewberry was certified to CMMC Level 2 by a Certified Third-Party Assessor Organization, C3PAO, who was accredited by The Cyber AB. According to the Federal Register, a CMMC Level 2 appraisal means Dewberry has attained the following goals:

- Safeguard sensitive information to enable and protect the warfighter
- Enforce Defense Industrial Base (DIB) cybersecurity standards to meet evolving threats
- Ensure accountability while minimizing barriers to compliance with DoD requirements
- Perpetuate a collaborative culture of cybersecurity and cyber resilience
- Maintain public trust through high professional and ethical standards

Achieving this certification underscores the firm's commitment and ability to securely manage and deliver projects for federal clients. Dewberry is focused on providing safe, secure, and reliable infrastructure solutions to help its clients achieve their mission objectives. 