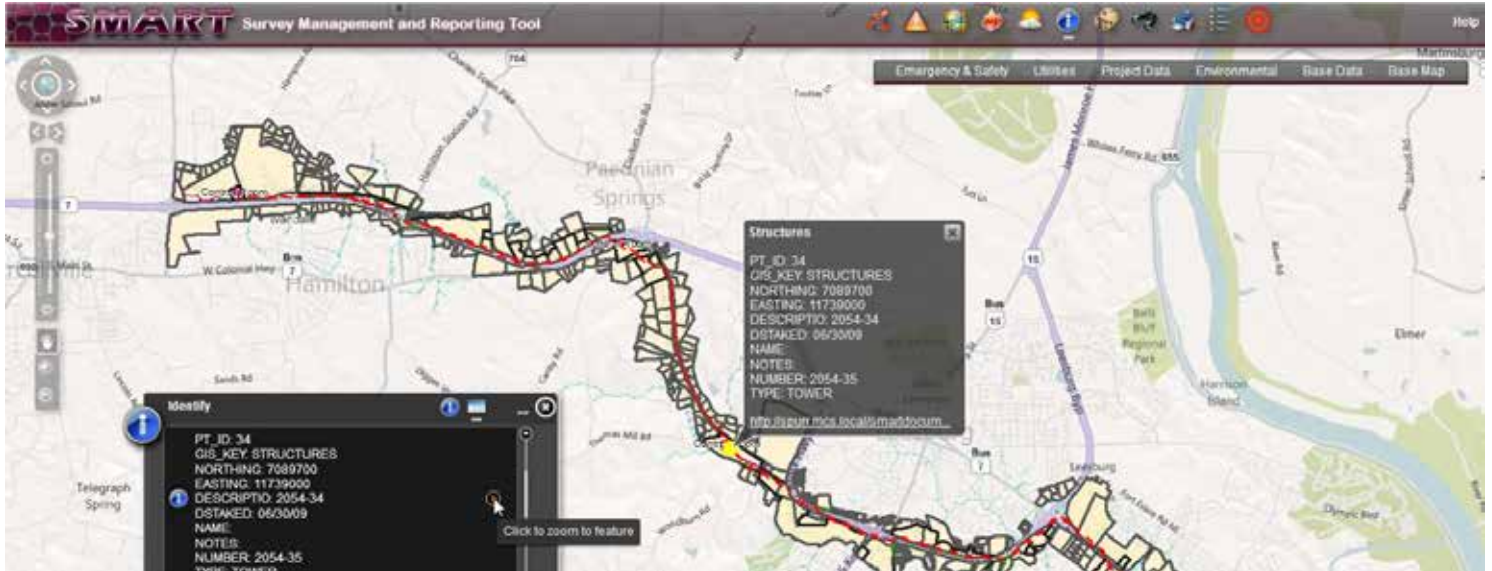




Survey Management and Reporting Tool



The Dewberry Survey Management and Reporting Tool or SMART is a proprietary web-based, geospatial information system for end-to-end managing and reporting of field survey activity. Designed to achieve improved safety and efficiency, Dewberry offers this tool on more complex projects, where proactive decision-making, responsiveness and flexibility are essential in directing, scheduling, and tracking day-to-day activities and operations.

Emphasis on Safety

SMART allows users to plan and schedule day-to-day activities based on known hazards and several real time environmental factors that may magnify or present new hazards. The tool provides the means for emergency action and response.

- Integration with client safety and security structure and protocols
- Real-time field personnel location
- Safety and security notification options via internal team emergency alert broadcast system
- Precise display and location of local emergency facilities:
 - Hospitals
 - Fire stations
 - Law enforcement
 - Heliports and airfields
 - Ranger stations
- Real-time weather radar warning system
- Fire warning system

Real-Time Project Management

The SMART environment gives project management personnel the analytical tools needed to produce client schedules and reports based on real time data.

- Real-time scheduling and tracking of day-to-day field and office operations
- Improved project reporting that produces, analyzes, and updates project schedules and reports
- Improved responsiveness enabled by real-time data that supports flexible decision-making
- Process improvement through using tracked progress, measured results and integrated project data to develop lessons learned and apply to subsequent project planning

Manage, Store and Display Project Data

Dewberry SMART captures, stores, manages and displays real-time project data, scaled to meet project needs and tailored to client requirements.

The tool avoids redundancy by integrating with client and other team member project databases as well as public information sources.

- Produce real-time project maps
- Store and display pertinent project data:
 - Project alignments
 - Project control locations and data sheets
 - Survey field notes
 - Record plats and exhibits

Ready to answer questions about this value-added approach, customized to your specific project needs:

Gary Simpson, PLS
gsimpson@dewberry.com
301.364.1855
fax 301.731.0188
www.dewberry.com