




Courts

A wide-angle photograph of a modern courthouse interior. The space is characterized by a high ceiling with a grid of recessed lighting and large skylights. A prominent feature is a wide, multi-level staircase with a glass railing, leading up to a glass-enclosed upper level. The ground floor has a polished, light-colored floor with a geometric pattern. The walls are made of light-colored stone or concrete panels. The overall atmosphere is bright and open.

One of the first firms in the nation to specialize in courts architecture, we have been providing expertise in this vital area of practice for nearly 40 years.

Many of the professionals within our courts practice—including our in-house security and technology group—have devoted their entire careers to the design of court facilities. This expertise allows us to respond to our clients' unique requirements with fresh and creative solutions that are resourceful and operationally sound.

Dewberry knows that beyond issues of space and security requirements, our work is about creating environments that embody a community's identity and inspire a sense of justice in action.

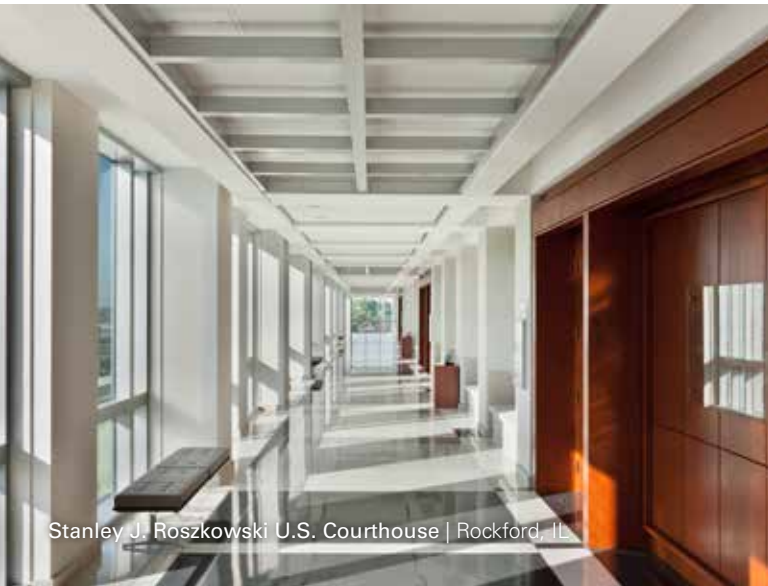
"Dewberry has worked with the United States Court of Appeals for the Federal Circuit for over ten years...

[they] are professional in every aspect and are highly recommended for any complex courthouse design work in the future."

Jan Horbaly
*Former Circuit Executive
Clerk of the Court
United States Court of Appeals
for the Federal Circuit*



Stanley J. Roszkowski U.S. Courthouse | Rockford, IL



Stanley J. Roszkowski U.S. Courthouse | Rockford, IL



Stanley J. Roszkowski U.S. Courthouse | Rockford, IL



Chester County Courthouse | West Chester, PA

Architect of Record: Bernardon Haber Hollow



We serve a broad spectrum of federal, state, and local government clients; and offer a complete range of services from feasibility studies and master plans to full designs for renovations, expansions, and stand-alone new facilities.

Discovery	Analysis	Direction
<ul style="list-style-type: none">• Program evaluation• Adjacency & operational parameters/opportunities• Site criteria• Budget/schedule impacts	<ul style="list-style-type: none">• Site development options• Contextual responses• Multiple planning & design options• Agreement on concepts	<ul style="list-style-type: none">• Consensus-based solution• Documentation of final design solution• Budget/schedule finalized• Project implementation



Davidson County Courthouse | Nashville, TN

Architect of Record: Barge, Waggoner, Sumner & Cannon Inc.; Justice Architect: Dewberry



Chatham County Courthouse | Savannah, GA

Architect of Record: Dewberry

ay; Justice Architect: Dewberry

Dewberry® Services

- Architectural planning/design
- Programming/master planning
- Facilities assessment
- Interior design
- Sustainable design
- Full-service engineering
- Security/technology design
- IT/communications design
- Construction administration
- Landscape architecture

Dewberry is a leading, market-facing firm with a proven history of providing professional services to a wide variety of public- and private-sector clients. Recognized for combining unsurpassed commitment to client service with deep subject matter expertise, Dewberry is dedicated to solving clients' most complex challenges and transforming their communities. Established in 1956, Dewberry is headquartered in Fairfax, Virginia, with more than 40 locations and 2,000 professionals nationwide. To learn more, visit www.dewberry.com.



Davidson County Courthouse
| Nashville, TN



Davidson County Courthouse | Nashville, TN

Justice@dewberry.com